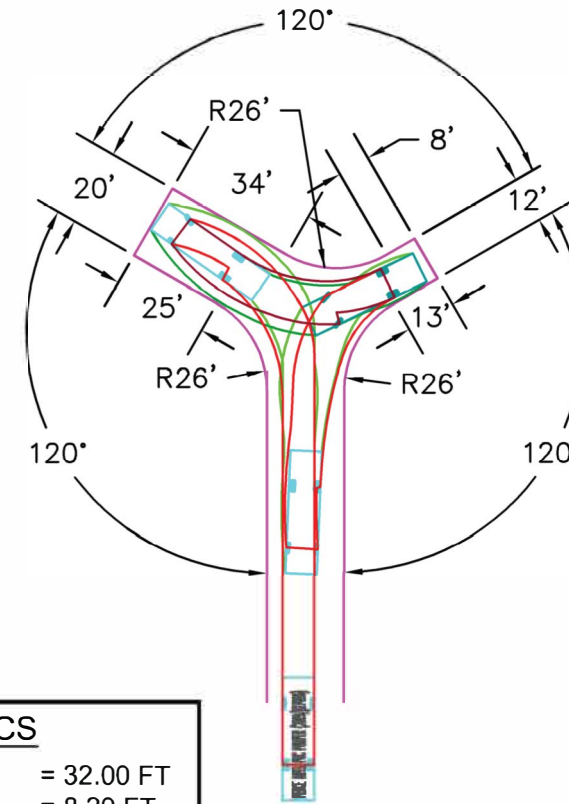
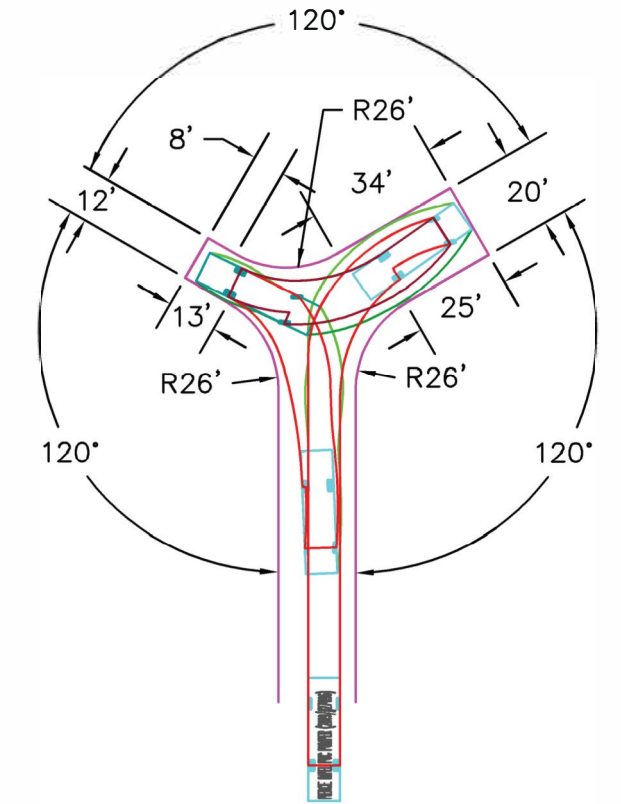


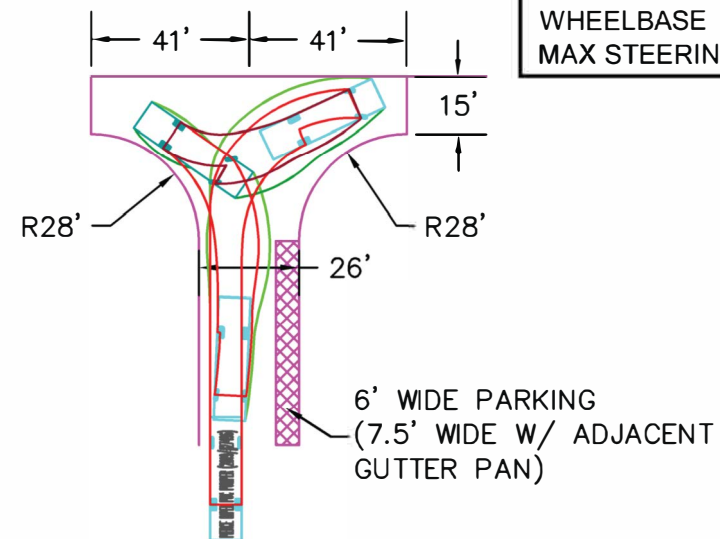
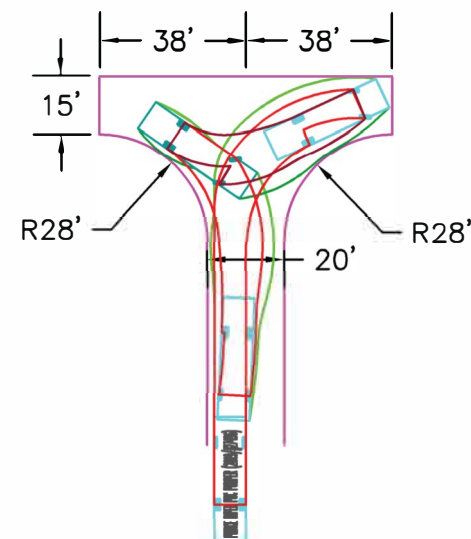
CUL-DE-SAC



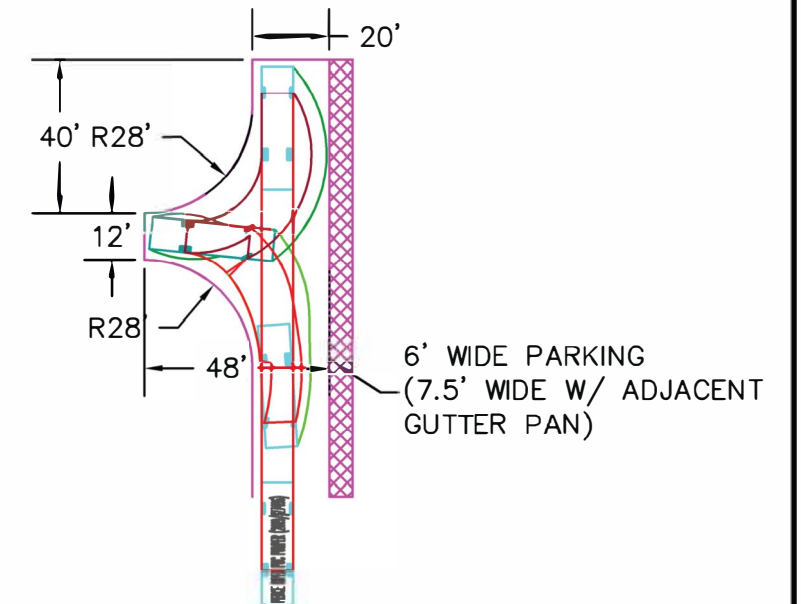
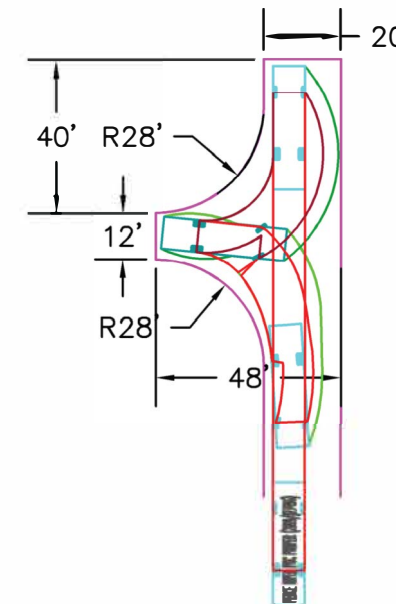
"Y"



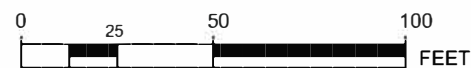
APPARATUS SPECS	
OVERALL LENGTH	= 32.00 FT
OVERALL WIDTH	= 8.20 FT
OVERALL BODY HT	= 9.92 FT
MIN BODY GROUND CLEARANCE	= 1.37 FT
TRACK WIDTH	= 8.20 FT
LOCK-TO-LOCK TIME	= 6.00 SEC
CURB TO CURB TURNING RADIUS	= 30.00 FT
WHEELBASE	= 16.10 FT
MAX STEERING ANGLE	= 37.3 DEG



HAMMERHEAD



HAMMERHEAD ALTERNATIVE



PIERCE IMPEL PUC PUMPER (2019/#34593)
TURNAROUND ANALYSIS (GVW 46,500)



City of Missoula

**PUBLIC WORKS
& MOBILITY**

