

Monthly Development Snapshot

February, 2022



Population 75,516
as of July, 2019



more detailed information available at:
<https://www.ci.missoula.mt.us/1638/Private-Development-Projects>

New Residential Construction Permits issued February, 2022

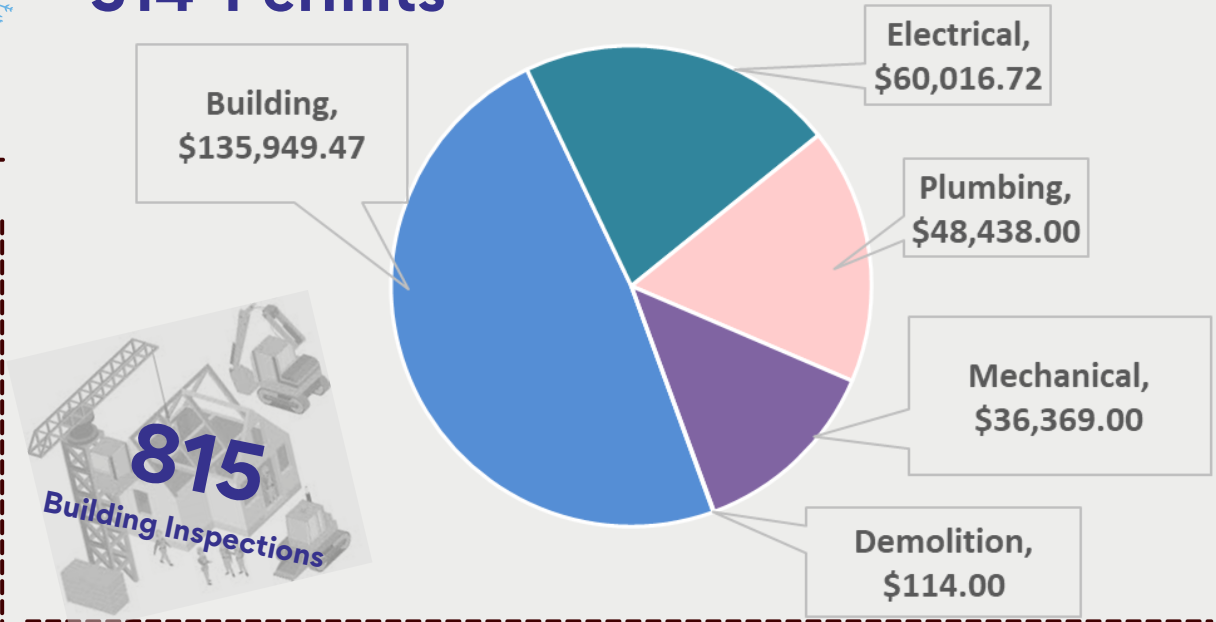
	Single Family Detached	3	\$475,875.90 valuation
	Apartment Units	52	\$2,149,828.58 valuation
	TED * Single Dwelling Units	8	\$779,859.40 valuation
	TED * Two Units	2	\$172,746.40 valuation
	TED * 3+ Units	6	\$544,490.70 valuation

(* Townhome Exemption Development)

Permitting - February, 2022

Building Permits and Revenue

314 Permits



Growth - Residential Construction, Fiscal Year to Date February, 2022

(Fiscal Year is July 1st to June 30th)

