





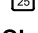



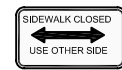


-  TYPE III BARRICADE
-  TYPE II BARRICADE
-  TYPE I BARRICADES

-  WARNING SIGNS
-  DETOUR SIGNS
-  DETOUR ROUTING
-  REGULATORY SIGNS

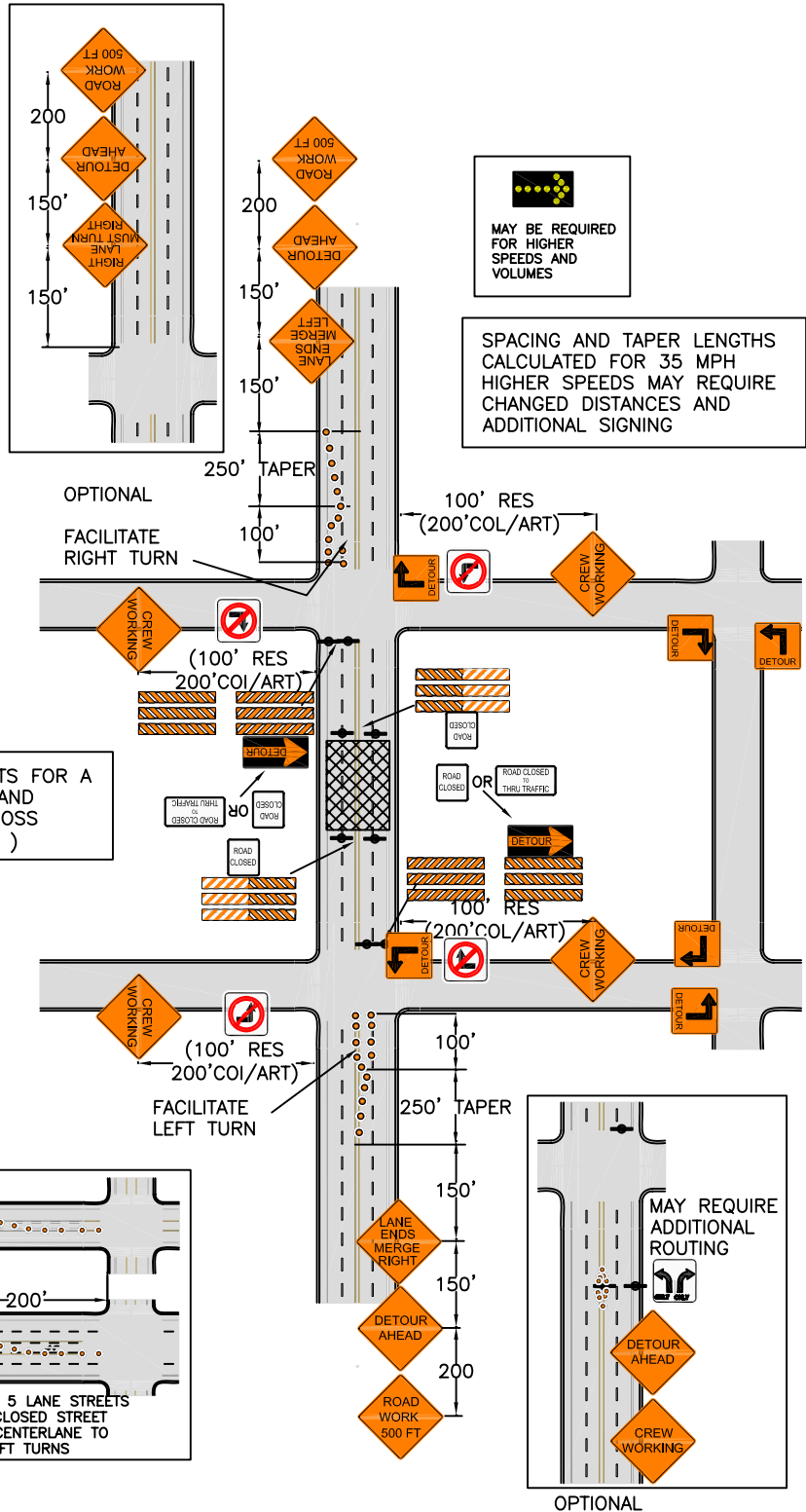
-  DELINEATORS
-  SIGN LOCATION SYMBOL
-  WORK ZONE



SIDEWALK CLOSED
MUST BE USED
WHENEVER A CITY
SIDEWALK IS TO BE
CLOSED

TRAFFIC CONTROL MUST CONFORM TO THE MANUAL ON UNIFORM TRAFFIC CONTROL DEVICES (MUTCO)

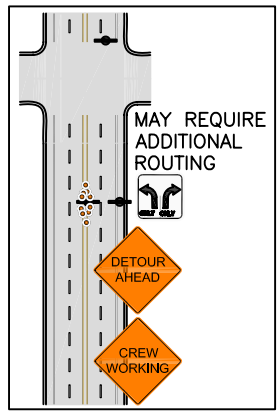
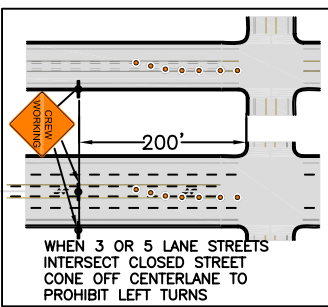
TRAFFIC CONTROL MINIMUM REQUIREMENTS SHALL INCLUDE PROVIDING FOR THE NEEDS AND CONTROL OF ALL USERS; MOTORISTS, BICYCLISTS AND PEDESTRIANS, INCLUDING PERSONS WITH DISABILITIES IN ACCORDANCE WITH THE AMERICANS WITH DISABILITIES ACT (ADA). THROUGH A TEMPORARY TRAFFIC CONTROL ZONE SHALL BE ESSENTIAL IN ANY ROADWAY CONSTRUCTION, UTILITY WORK, MAINTENANCE OPERATIONS AND THE MANAGEMENT OF TRAFFIC INCIDENTS. SPECIAL ATTENTION SHALL BE USED WHEN / WHERE TEMPORARY TRAFFIC CONTROL IS ADJACENT TO PUBLIC SCHOOLS AND DURING PERIODS OF PEAK-HOUR TRAFFIC.



MAY BE REQUIRED FOR HIGHER SPEEDS AND VOLUMES

SPACING AND TAPER LENGTHS CALCULATED FOR 35 MPH HIGHER SPEEDS MAY REQUIRE CHANGED DISTANCES AND ADDITIONAL SIGNING

REQUIREMENTS FOR A COLLECTOR AND ARTERIAL CROSS STREET IN ()



Digital Standard Drawings and other maps are available on the City website: http://www.ci.missoula.mt.us/publicworks/gis_maps.htm



TYPICAL TRAFFIC CONTROL PLAN

STREET CLASSIFICATION:
4 LANE ARTERIAL
CLOSE STREET

Revision Date:
03/2004
TC - 407