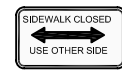


- TYPE III BARRICADE
- TYPE II BARRICADE
- TYPE I BARRICADES

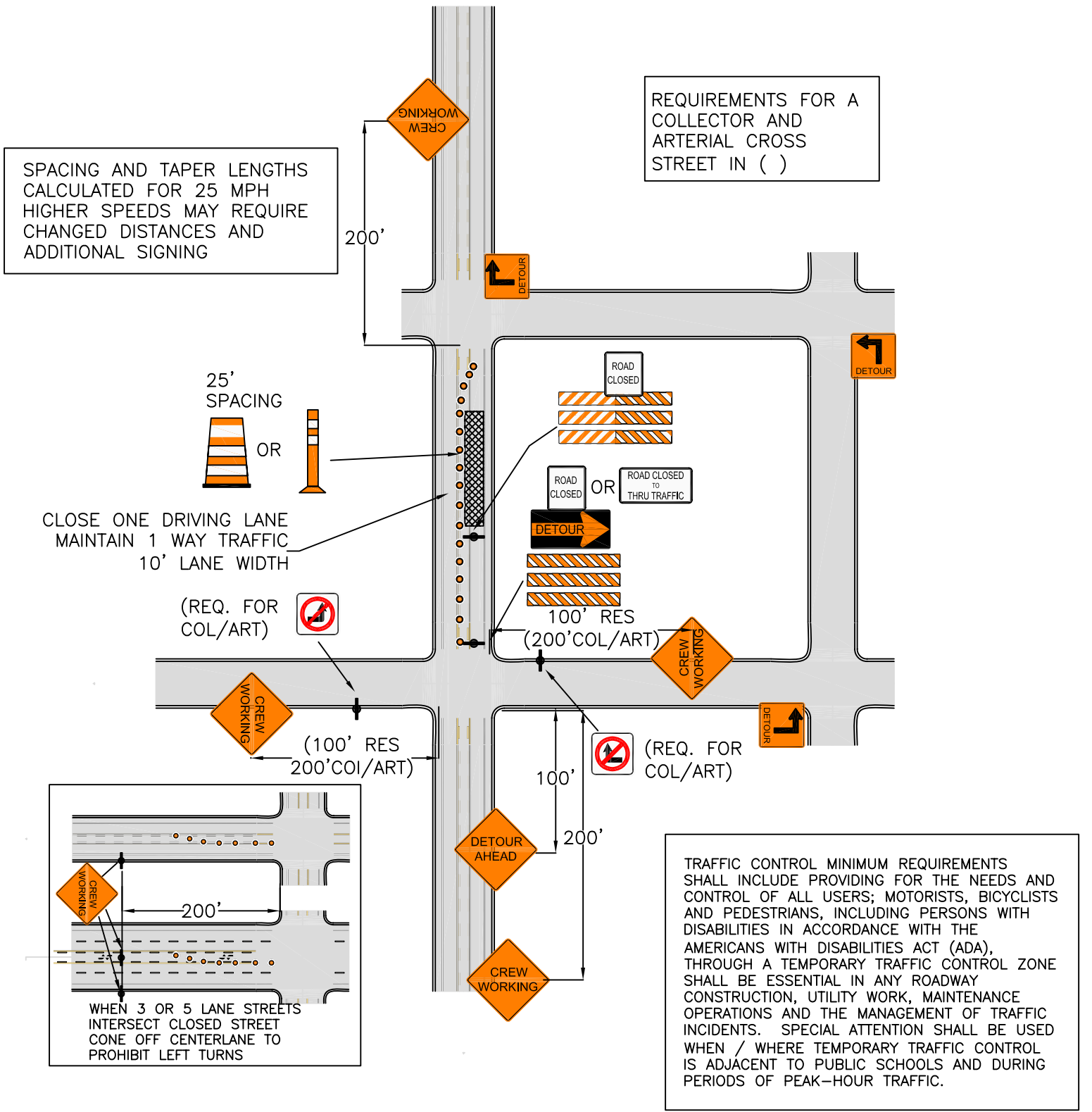
- WARNING SIGNS
- DETOUR SIGNS
- DETOUR ROUTING
- REGULATORY SIGNS

- DELINEATORS
- SIGN LOCATION SYMBOL
- WORK ZONE



SIDEWALK CLOSED  
MUST BE USED  
WHenever A CITY  
SIDEWALK IS TO BE  
CLOSED

TRAFFIC CONTROL MUST CONFORM TO THE MANUAL ON UNIFORM TRAFFIC CONTROL DEVICES (MUTCO)



Digital Standard Drawings and other maps are available on the City website: [http://www.ci.missoula.mt.us/publicworks/gis\\_maps.htm](http://www.ci.missoula.mt.us/publicworks/gis_maps.htm)



# TYPICAL TRAFFIC CONTROL PLAN

STREET CLASSIFICATION:  
3 LANE COLLECTOR  
CLOSE DRIVING AND TURNING LANE

Revision Date:  
03/2004

**TC - 305**