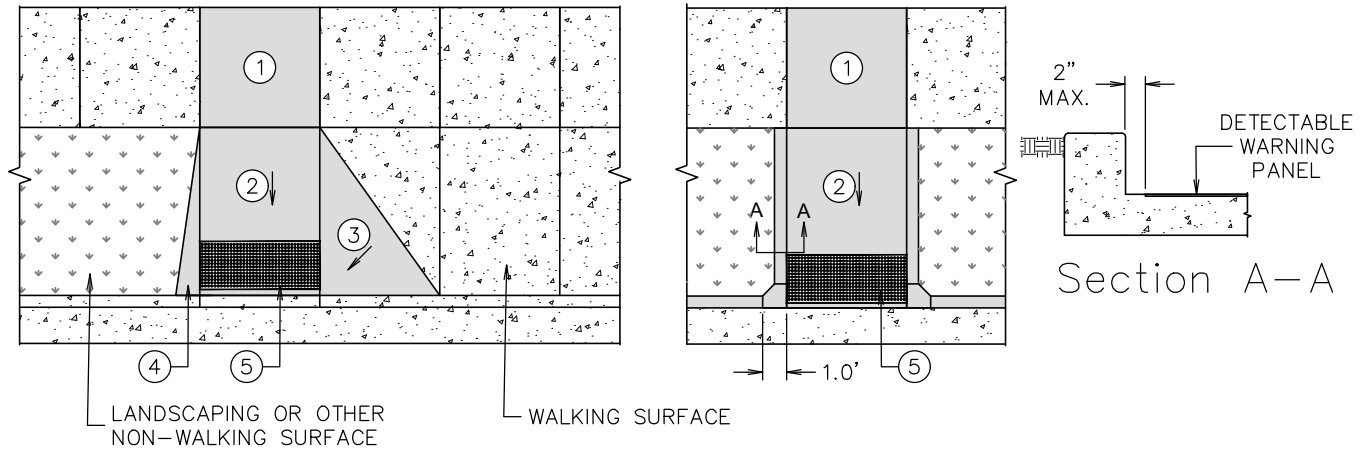
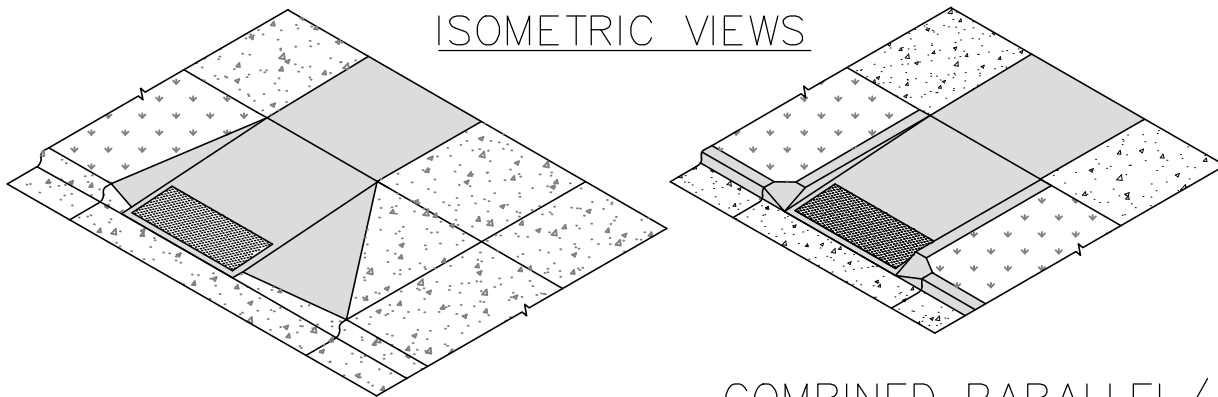


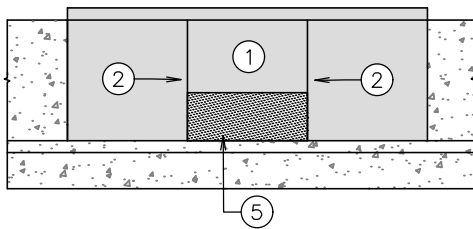
PERPENDICULAR CURB RAMP ALTERNATE CONFIGURATION



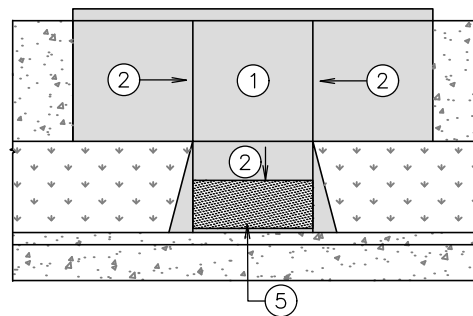
ISOMETRIC VIEWS



PARALLEL CURB RAMP



COMBINED PARALLEL/PERPENDICULAR CURB RAMP



KEYED NOTES:

- (1) LANDING. 5' X 5' PREFERRED DIMENSION, 4' X 4' MINIMUM. MAXIMUM SLOPE IS 2% IN ANY DIRECTION.
- (2) RAMP. 8.3% MAXIMUM RUNNING SLOPE. 2% MAXIMUM CROSS-SLOPE.
- (3) FLARED SIDE. 10% MAXIMUM SLOPE.
- (4) 1' FLARED TRANSITION FROM CURB LAY-DOWN TO TOP OF CURB.
- (5) DETECTABLE WARNING PANELS PER STD-750.
- (6) CONCRETE SIDEWALK SECTIONS, BASE, AND SUB GRADE PER STD-752.



Engineering Division

Curb Ramp Details (Sheet 1 of 4)

Approved By
City Engineer
Kevin J. Slovarp

Adopted: 01/30/1980
Revised: 03/15/2017

STD - 751-1