

Contact: **Morgan Valliant**  
**Ecosystem Services Superintendent**  
valliantm@ci.missoula.mt.us  
(406) 552-6263

**Liz Bradley**  
**Wildlife Biologist**  
Montana Fish, Wildlife and Parks  
lbradley@mt.gov  
(406) 542-5515

600 Cregg Lane  
Missoula, MT 59801  
www.missoulaparks.org



---

## MISSOULA PARKS AND RECREATION PUBLIC SERVICE ANNOUNCEMENT

*For immediate release through March 22, 2021*

### **Mount Jumbo South Zone opens March 22, dog leashes required**

***To protect wildlife, dogs must be leashed in the South Zone through April 1 or later.***

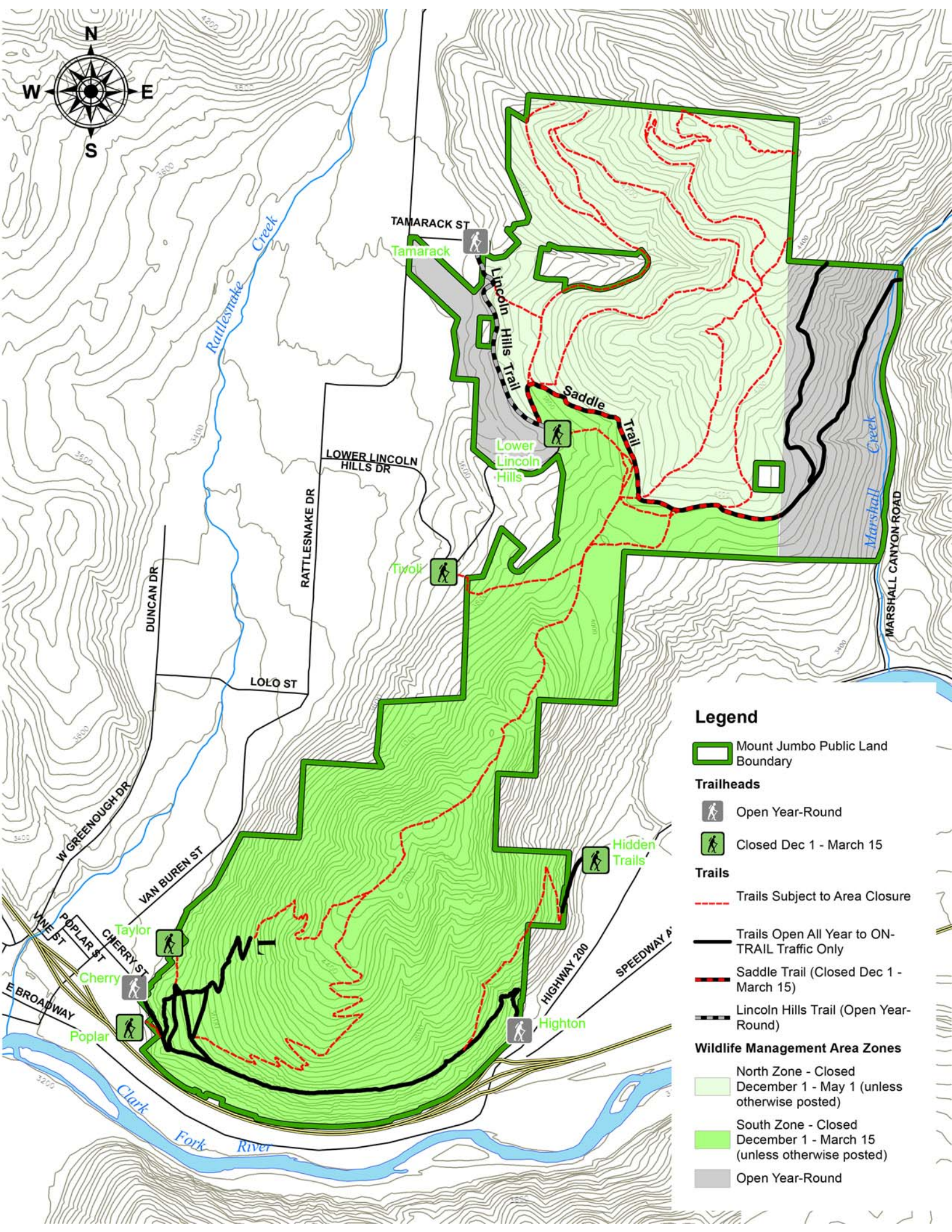
In consultation with wildlife biologists at Montana Fish, Wildlife and Parks, Parks and Recreation will reopen Mount Jumbo's South Zone, which includes all points south of the Saddle Road, on Monday, March 22. Dog owners must leash their pets throughout the South Zone until at least April 1 to protect the 20-25 elk that have remained on Jumbo's southwest flanks to feed. Parks and Recreation will post periodic updates about the South Zone leash requirement at [www.missoulaparks.org](http://www.missoulaparks.org).

Most of Mount Jumbo is closed annually on December 1 to protect wintering wildlife, including the 75 to 90 elk and other animals that inhabit Jumbo's lower elevations to forage and regain their strength after a long winter. Jumbo's North Zone, which includes all points north of the Saddle Road, will remain closed until May 1 or later, depending on weather conditions. The "L" Trail and US West Road remain open all year.


The City of Missoula would like to thank residents for their cooperation in protecting the Mount Jumbo elk herd and other wildlife. Until March 22, visitors are required to stay on the "L" and US West trails and leash their dogs.

Please call 911 to report wildlife closure violations. For more information, call 721-PARK (7275.) Visit [www.missoulaparks.org](http://www.missoulaparks.org) for maps and more information.


(END)



### Legend

 Mount Jumbo Public Land Boundary

### Trailheads


 Open Year-Round

 Closed Dec 1 - March 15

### Trails


 Trails Subject to Area Closure


 Trails Open All Year to ON-TRAIL Traffic Only


 Saddle Trail (Closed Dec 1 - March 15)

 Lincoln Hills Trail (Open Year-Round)

### Wildlife Management Area Zones

 North Zone - Closed December 1 - May 1 (unless otherwise posted)

 South Zone - Closed December 1 - March 15 (unless otherwise posted)

 Open Year-Round